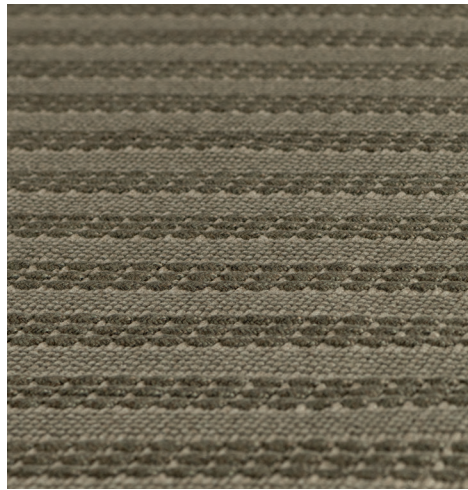


## HEDERA by Perennials — VINCENT VAN DUYSSEN 2022

1—  
2



### TECHNICAL INFORMATION

Thickness: 0,8 cm cut / 0,6 cm loop  
Weight: 3800 gr/mq  
Structure: hand-knotted - 100% solution-dyed acrylic

### COLOURS

Sand base - olive green

### MAINTENANCE

Stains should be removed promptly using an absorbent cloth, frequent vacuuming and/or light brushing. Clean with water and allow to dry naturally avoiding exposure to direct sunlight.

### WASHING

Professional cleaning recommended.

Customised carpets are available prior feasibility verification by the Molteni Sales Dept.

### DATASHEET

REGISTERED  
DESIGN

X.2022

### General notes

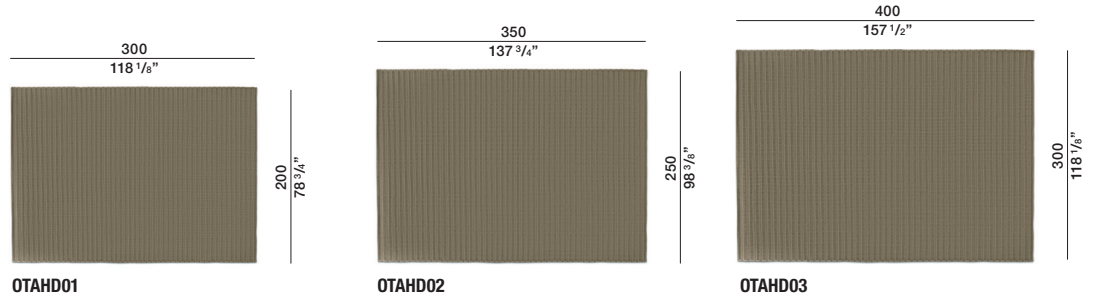
This rug is hand-made. Any irregularities are elements that emphasize the distinctiveness of craftwork and should not be considered defects. Slight variations in colour may occur from dye lot to dye lot.

Dimensions in centimeters and inches. The right to discontinue and make changes is reserved. This information is based on the latest product information available at the time of printing.

**HEDERA**  
BY PERENNIALS —  
VINCENT  
VAN DUYSSEN  
2022

## DIMENSIONS

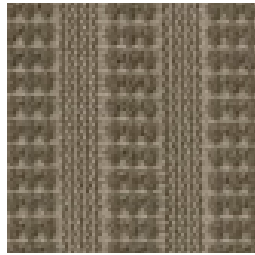
**Hedera**



**Molteni & C** | OUTDOOR

2—  
2

Sand base - olive green



## DATASHEET

REGISTERED  
DESIGN

X.2022