

## PANTALICA — ELISA OSSINO 2025



Imagined by Milan-based designer, Elisa Ossino, for Molteni&C the Pantalica outdoor concept for Molteni&C is an ode to art, circularity, and ancient Mediterranean inspiration. The weaving is in polypropylene, a sustainable material perfect for the outdoor that can continuously be reintroduced into production for use at the end of the product's life cycle. Complementing Molteni&C's Timeout and Landmark collections, Pantalica reimagines outdoor spaces by fusing tradition with modern living, offering versatile styles to suit diverse tastes while prioritizing elegance and respect for the environment. The Pantalica Daybed offers a comfortable chaise longue to enhance the elegant possibilities of exterior living spaces. Upon a sturdy aluminum frame embellished with weather-resistant polypropylene weave, the supportive headrest cushion and daybed liner are molded in a compelling cylindrical pattern, contrasting the frame's sinuous shape with distinctive linearity. The cushions feature a removable cover available in any Outdoor Collection fabric. The Pantalica Coffee Table is a sculptural addition to outdoor ambiances. Crafted with a sturdy aluminum frame, the table is composed of four cylindrical bases and a round top embellished in weather-resistant synthetic rattan weave made of polypropylene. Designed for multi-functional use as small tables or additional seating, the Pantalica Stools create flexible possibilities for the outdoor environment. Embellished with weather-resistant polypropylene wave in a natural color, the stools' sturdy aluminum frames are composed of one or four cylindrical base and a cube- or square-shaped top. Their supple top makes for a comfortable seat without requiring a cushion. Last but not least, the Pantalica Rug is crafted from weather-resistant polypropylene in a loose weave that allows light and air to pass through. The design makes use of strips of intermittent length to create an irregular edging for an artistic finish.



Removable cover



The product is sent in multiple packaged and/or flat packed



The product may be used outdoors but requires particular care in the event of rain (see price list maintenance and waterproof cover)



Product suitable for collective uses (Contract)

### DATASHEET

REGISTERED  
DESIGN

2025

## DAYBED AND SMALL TABLES FINISHES

STRUCTURE FINISH  
Painted aluminum

WEAVE FINISH  
Polyethylene (PE)  
Rattan Sand

## TECHNICAL INFORMATION

STRUCTURE  
painted tubular aluminium sections, plastic ferrules

SEAT STRAPS DAYBED AND SMALL TABLES  
polypropylene fibre and synthetic rubber threads

WEAVE  
polyethylene fibre

SEAT CUSHIONS  
shaped polyurethane insert in different densities,  
water-repellent polyester fibre cover, 100% recyclable

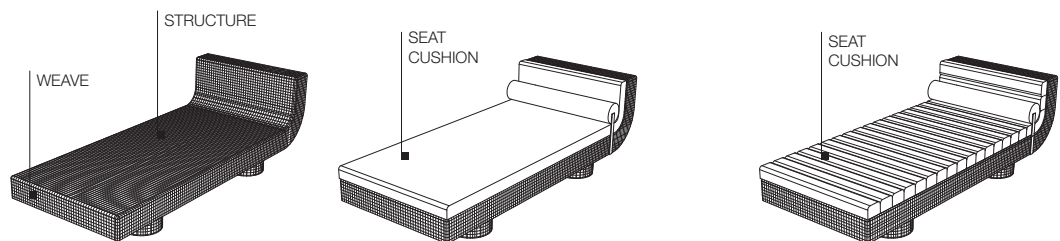
CUSHION UPHOLSTERY DAYBED SEAT  
fabric in limited categories

CUSHION STRAP HEADREST  
EVA polyurethane

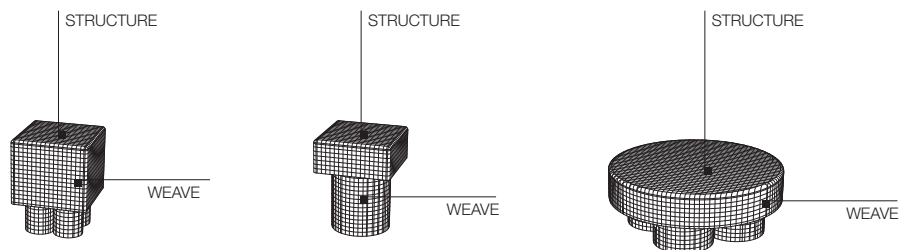
WATER-REPELLENT COVER  
100% polyester

Molteni & C | OUTDOOR

2—  
4



DAYBED



SMALL TABLES

## DATASHEET

REGISTERED  
DESIGN

2025

## DIMENSIONS

### Notes

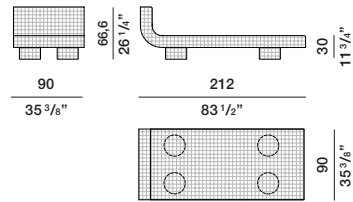
No reductions of any kind or changes in finish are possible.

### When placing an order

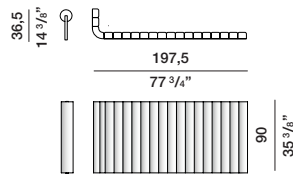
Always specify the code of the daybed and mattress.

#### Daybed

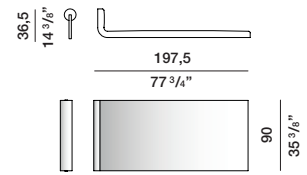
##### PLE1



##### PCLE1A



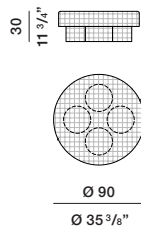
##### PCLE1B



#### water-repellent cover XPLE1

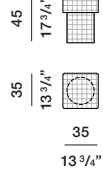
#### Small tables

##### PTV1



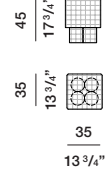
#### water-repellent cover XPTV1

##### PTV2



#### water-repellent cover XPTV2

##### PTV3



#### water-repellent cover XPTV3

## PANTALICA — ELISA OSSINO 2025

### TECHNICAL INFORMATION

Thickness: 5 mm cut

Weight: 3000 g/m<sup>2</sup>

Structure: strips in 100% mass-dyed acrylic, assembled manually

### COLOURS

Green, Brown

### MAINTENANCE

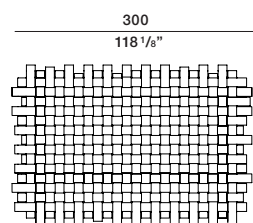
Stains should be removed promptly using an absorbent cloth, frequent vacuuming and/or light brushing, clean with water and leave to dry naturally, avoiding direct sunlight.

### WASHING

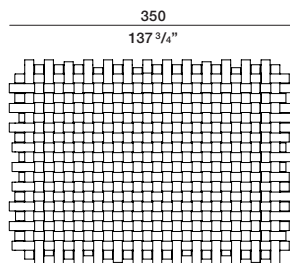
Professional cleaning recommended.

Custom rugs can be made after checking with the Molteni&C Sales Office.

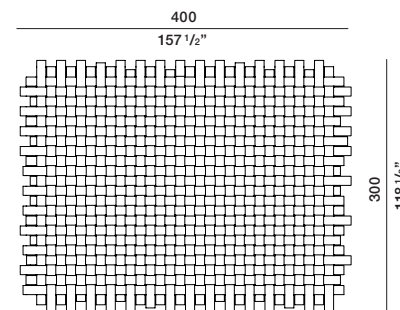
### Carpet



TAPT01



TAPT02

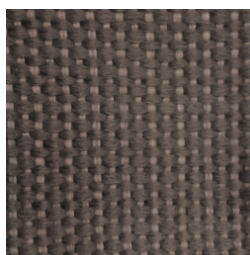


TAPT03

Green



Brown



### DATASHEET

REGISTERED  
DESIGN

2025