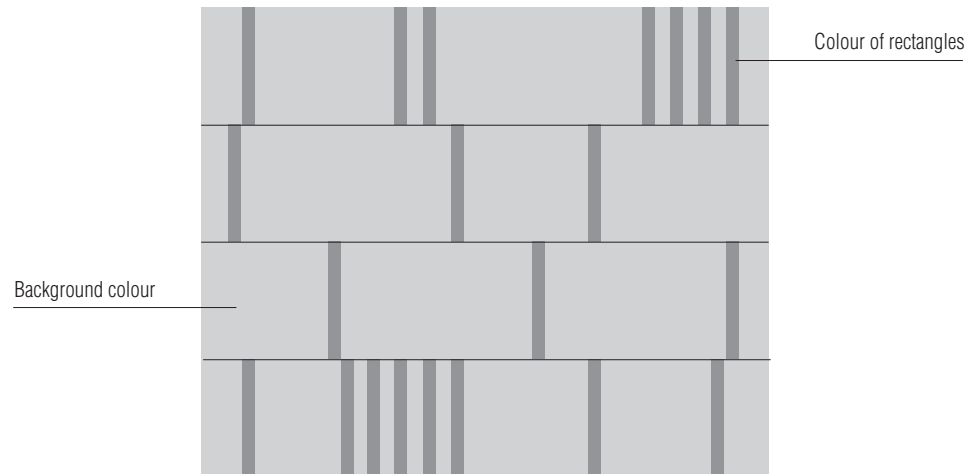


Molteni & C

SONORO — NICOLA GALLIZIA 2024

1—
2



General notes

- Copyright protected
- Any irregularities should not be considered a defect but an element that emphasizes the distinctiveness of craft work
- A slight variation in colour may occur from dye lot to dye lot

DATASHEET

REGISTERED
DESIGN

2025

[moltenigroup.com](https://www.moltenigroup.com)

Dimensions in centimeters and inches. The right to discontinue and make changes is reserved. This information is based on the latest product information available at the time of printing.

TECHNICAL INFORMATION

Height fleece: cm. 0,6 / 0,8
Density: 3 Kg/mq
Structure: hand-woven on loom
Wool 80% + Cotton 20%

MAINTENANCE
Low-power carpet cleaner

CLEANING
Professional cleaning recommended

COLOUR MATCHING

The rug can be in one or two colours.
When placing an order, the Customer must ALWAYS select the background colour and the colour of the rectangles from those available:

IVORY
EBONY
ASH

MADE TO MEASURE

Rugs can be made to measure subject to a feasibility check by the Molteni&C. Sales Office, which reserves the right to change the proportions of the pattern.

NOTES

The overall size of the rugs, including customised articles, may vary by approximately 3 cm due to how they are made.

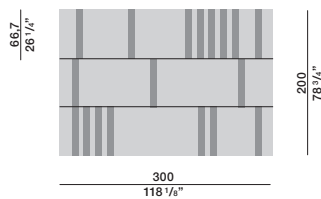
Molteni & C

2—
2

DIMENSIONS

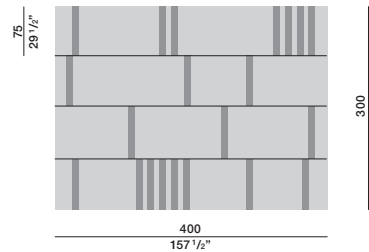
TAS001

Rectangle size 66,7x8



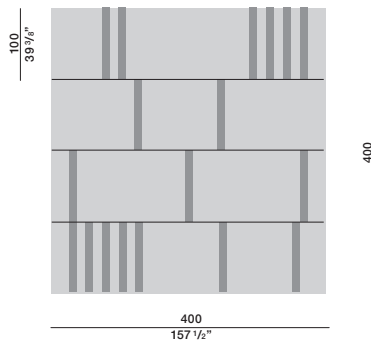
TAS002

Rectangle size 75x9



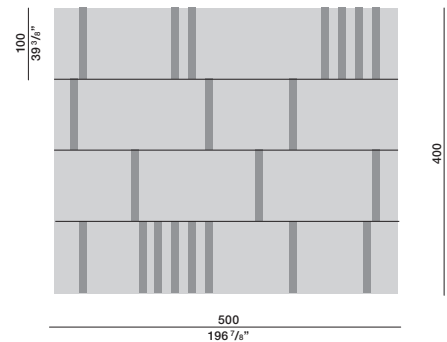
TAS003

Rectangle size 100x12



TAS004

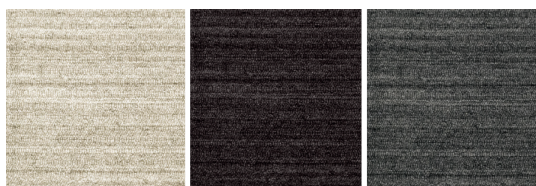
Rectangle size 100x12



Ivory

Ebony

Ash



DATASHEET

REGISTERED
DESIGN

2025