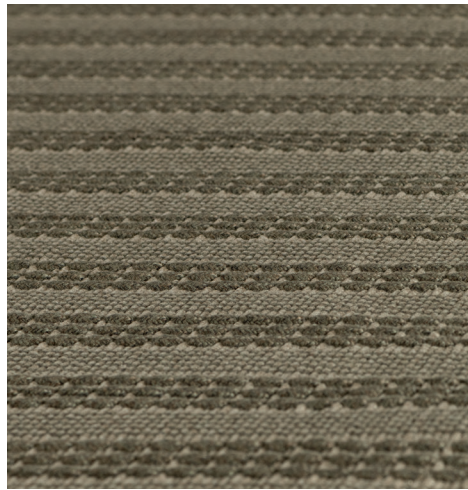


HEDERA by Perennials — VINCENT VAN DUYSSEN 2022

1—
2



TECHNICAL INFORMATION

Thickness: 0,8 cm cut / 0,6 cm loop
Weight: 3800 gr/mq
Structure: hand-knotted - 100% solution-dyed acrylic

COLOURS

Sand base - olive green

MAINTENANCE

Stains should be removed promptly using an absorbent cloth, frequent vacuuming and/or light brushing. Clean with water and allow to dry naturally avoiding exposure to direct sunlight.

WASHING

Professional cleaning recommended.

Customised carpets are available prior feasibility verification by the Molteni Sales Dept.

DATASHEET

REGISTERED
DESIGN

2026

General notes

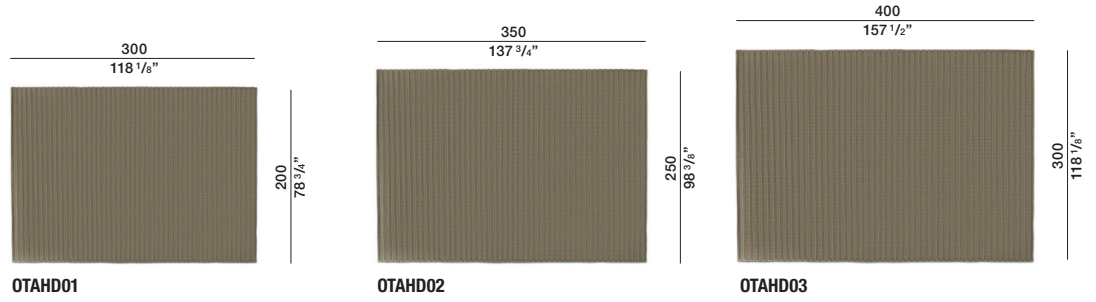
This rug is hand-made. Any irregularities are elements that emphasize the distinctiveness of craftwork and should not be considered defects. Slight variations in colour may occur from dye lot to dye lot.

Dimensions in centimeters and inches. The right to discontinue and make changes is reserved. This information is based on the latest product information available at the time of printing.

HEDERA
BY PERENNIALS —
VINCENT
VAN DUYSSEN
2022

DIMENSIONS

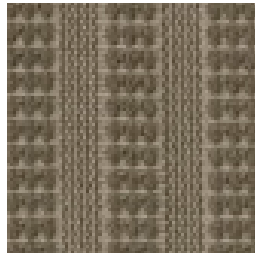
Hedera



Molteni & C | OUTDOOR

2—
2

Sand base - olive green



DATASHEET

REGISTERED
DESIGN

2026

moltenigroup.com

Dimensions in centimeters and inches. The right to discontinue and make changes is reserved. This information is based on the latest product information available at the time of printing.