

# Molteni & C

## BOUCLÈ COLLECTION — MARTA FERRI 2020

1—  
2



**DATASHEET**

REGISTERED  
DESIGN

IX.2023

**moltenigroup.com**

Dimensions in centimeters and inches. The right to discontinue and make changes is reserved. This information is based on the latest product information available at the time of printing.

## BOUCLÈ PLAID

A wool, silk and cashmere blanket made with a particular bouclé weave, which gives it a wavy and elaborate appearance. The silk fibre lends a subtle sheen, while the cashmere guarantees softness. A truly special textile item further enriched by a fringed border on the short side. Developed in a warm brown shade that contrasts with the more summery navy blue, as well as with the natural variant perfectly contextualized in every setting.

### TECHNICAL INFORMATION

#### Art. total Bouclè:

Composition: 87% wool 9% silk 4% cashmere

Fringe 5 cm

Weight: 410 gm2

#### COLOURS

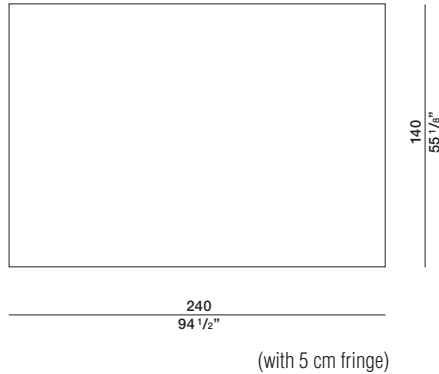
Off white \_ Bordeaux \_ Deep blue

#### CLEANING

Dry-clean

### DIMENSIONS

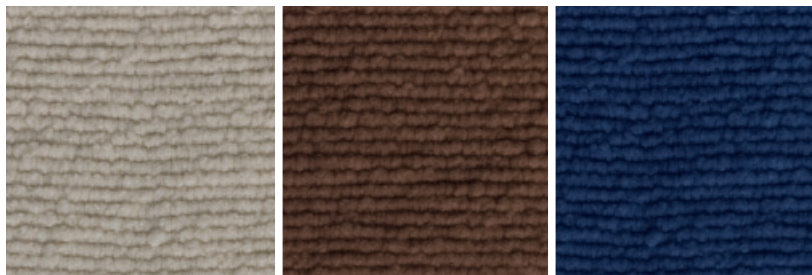
#### PLBOU14/24



Off white

Bordeaux

Deep blue



#### DATASHEET

REGISTERED  
DESIGN

IX.2023